

*Miracle Service* **Accent**<sup>™</sup>

# Installing Pervasive.SQL

How to install and configure Pervasive.SQL

Copyright © Vantage Computing Ltd 2002-2004.  
All rights reserved.

Last revision: 15<sup>th</sup> March 2004  
By: jasonl

# Contents

What is Pervasive.SQL?.....	2
What version do I need?.....	2
Installing the Pervasive.SQL Workgroup Engine .....	3
Nominating a workgroup gateway .....	3
Configuring the gateway .....	4
Installing the Pervasive.SQL Server Engine .....	6

## What is Pervasive.SQL?

Miracle Service Accent relies on a piece of software called a database engine; although Miracle Service Accent manages your data and presents it in a precise manner to you, the database engine is responsible for storing and retrieving your data from a storage medium like your hard disk.

There are many different types of database engines available, and Miracle Service Accent uses one called Pervasive.SQL, produced by Pervasive Software Inc. It is the database engine of choice because it has particular features that benefit Miracle Service Accent, including scalability (it can handle one user to thousands), price (it can be purchased in user brackets) and reliability.

As standard, Miracle Service Accent comes with a single user version of Pervasive.SQL called Btrieve. This is sufficient for evaluating Miracle Service Accent or for light use on a single user platform. However, Pervasive.SQL is obligatory for use with Miracle Service Accent.

## What version do I need?

There are two editions of Pervasive.SQL, which are:

- **Workgroup Edition**

This is designed for 2 to 5 users and does not rely on a specific network server. It is ideal for a network comprised of Windows 98, Windows NT 4.0 workstation, Windows 2000 Professional and Windows XP Professional, and this is normally called a peer-to-peer network, where no one pc takes overall charge of the network. Please note that Pervasive.SQL Workgroup version 8 and later will not run under Windows 95.

It is recommended that the network runs the TCP/IP network protocol.

- **Server Edition**

Designed for more than 5 users, this relies on a specific file server on the network to handle the workload of data processing. Windows NT 4.0 Server, Windows 2000 Server and Windows Server 2003 can be used as the operating system for the file server. It is available in user counts of 6, 10, 20 and higher.

It is recommended that the network runs the TCP/IP network protocol.

The version you have purchased or have been given to install reflects your requirements.

## Installing the Pervasive.SQL Workgroup Engine

The Pervasive.SQL Workgroup Engine needs to be installed on all workstations that will be running Miracle Service Accent. Additionally, one of these workstations, or a workstation that is not running Miracle Service Accent, must be nominated as the workgroup gateway (this will be discussed later).

To install the software, insert the CD-Rom in to the workstation's CD drive. The autoplay feature of Windows should run the setup routine automatically, but if not, use Windows Explorer to locate setup.exe on the CD-Rom.

**Note:** You should accept all the defaults during this installation.

Repeat this procedure for all workstations that will be running Miracle Service Accent.

## Nominating a workgroup gateway

In order for Pervasive.SQL to operate efficiently, one workstation in the workgroup is automatically nominated to be the workgroup gateway. This means that all requests to access the database from other members of the workgroup will be directed to the workgroup gateway, which will actually do the data processing on the database.

By default, the first workstation to access the database is automatically nominated to the role of workgroup gateway. This is often not a problem, but it can produce undesirable side-effects, including:

- Slow data retrieval if the workgroup gateway is a slow machine
- Inability to access the database if the gateway is turned off and other workgroup members are accessing the database
- Over-burdening the gateway if it has other applications running

For these reasons, it is usually recommended that one workstation is nominated to be the gateway. This machine should have the following qualities:

- Running during working hours (i.e., doesn't need to be turned off or rebooted while users are in Miracle Service Accent)
- Plenty of RAM (64Mb or more recommended)
- Fast (Pentium 200Mhz or faster recommended).

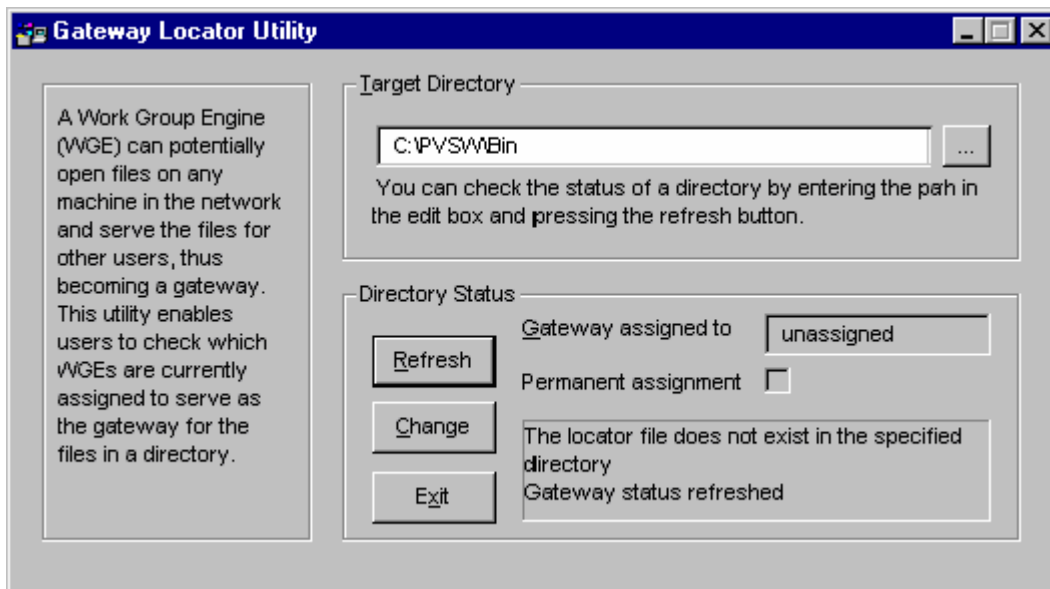
## Configuring the gateway


If the workstation to become the gateway does not already have Pervasive.SQL installed, you must install it now, as above.

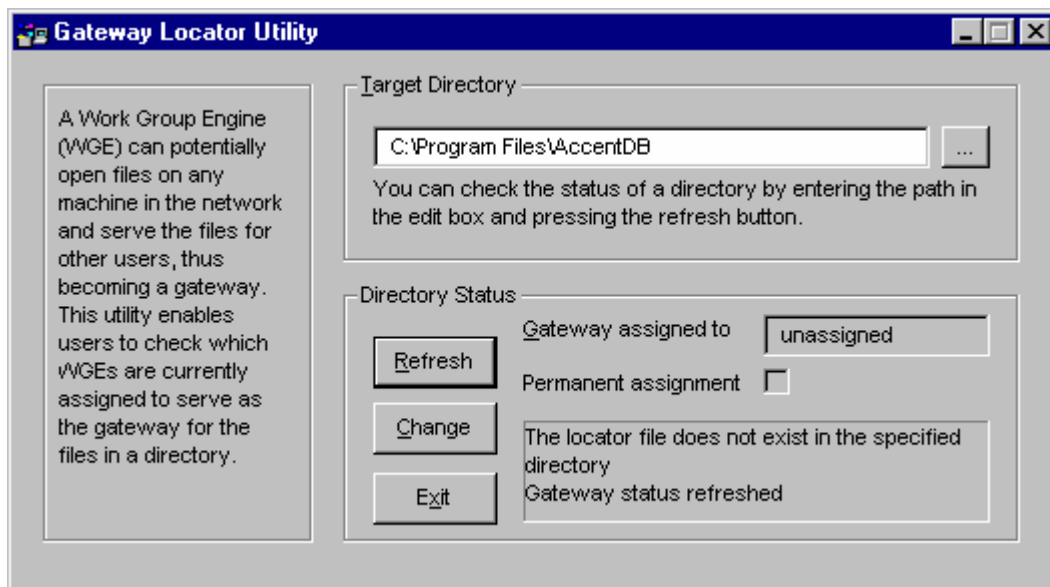
Once Pervasive.SQL has been installed, perform the following actions:

Click the Windows **Start** button, click on **Programs**, then click on **Pervasive**, then click on **Pervasive.SQL**, then click on **Utilities**, and finally click on **Gateway locator**.

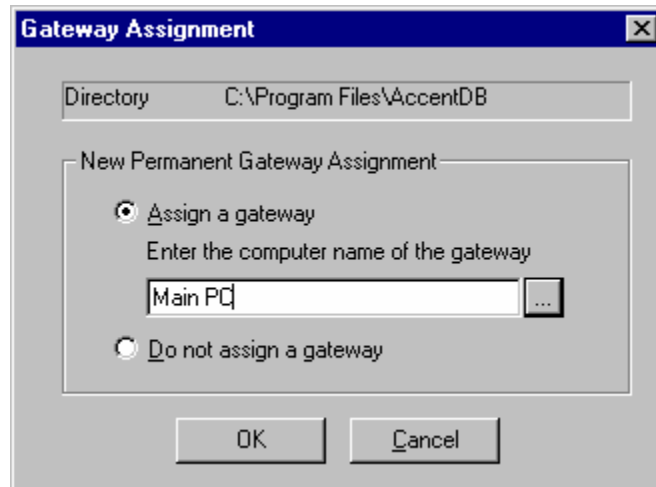
Initially, you will get the following screen:



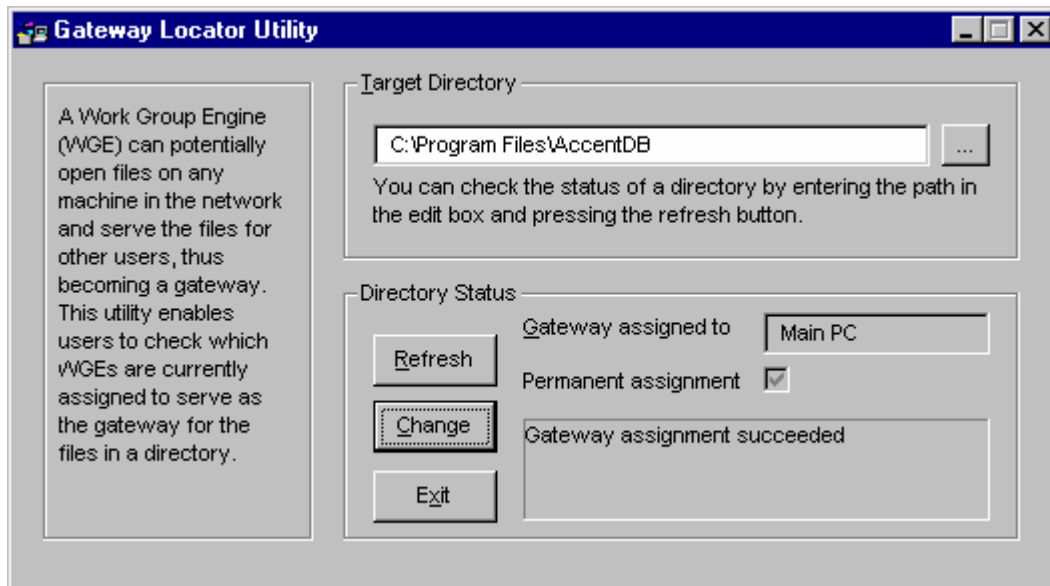
Click on the ellipses button (  ) button to select the correct folder containing the Miracle Service Accent database, so you see something like:



To set the gateway machine to own this database, click the **change** button...



By default, the option **Assign a gateway** is set, with the workstation's network name automatically entered. Click ok and check that the settings are correct, for example, you have chosen the correct **Target directory**, the **Gateway assigned to** field is pointing to this workstation, and **Permanent assignment** is ticked, as below:



Click exit to quit the Gateway Locator.

**Note** This setting is global to the network; in other words, any workstation connecting to the Target Directory you specify will know automatically what workstation is configured as the server. You do not need to repeat this on any other workstation.

## Installing the Pervasive.SQL Server Engine

Insert the Pervasive.SQL CD in your server and the server setup routine will begin automatically; the server components will be installed. It is recommended you keep the default values presented during setup.

You will need to install the client components on all of your workstations. Insert the Pervasive.SQL CD in your workstation and the client setup routine will begin automatically; the client components will be installed. It is recommended you keep the default values presented during setup.

You do not need to nominate a database gateway when you use the Server Edition as your server will assume the role of gateway automatically.